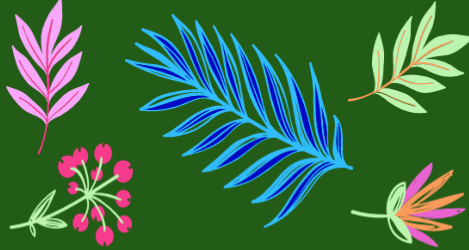


Redmond Chorale presents...

# Ancient Songs of Britain and Ireland

March 23<sup>rd</sup> 7-9pm & March 24<sup>th</sup> 2-4pm



Artistic Director: Laurie de Leonne  
Accompanist: Yuly Kopkin



**Tickets on sale now!**

<https://www.redmondchorale.org/concerts>

Adults \$15 | Children under 12 \$10 | Seniors \$12

The Episcopal Church of the Holy Cross  
11526 162nd Ave NE, Redmond

*With special thanks to:*



City of Redmond  
WASHINGTON



CULTURE

Tickets available on the door or online at [redmondchorale.org](http://redmondchorale.org)

# Ancient Songs of Britain and Ireland

Artistic Director

**Laurie de Leonne**

Accompanist

**Yuli Kopkin**

Flute

**Helen Lee**

Violin

**Mariya Ksondzyk**

Singers

**Jennifer Anderson** (also tambourine)

**Danka Batricevic** **Misha Meleshenko**

**Megan Benoy** **Amanda O'Connor**

**Beth Bishop** **Marian Ottewell**

**Vera Borodina** **Stephanie Parrott**

**Norman Bosell** **Russell Rhodes**

**Lyn Campbell** **Evan Rosenberg**

**Hannah Coleman** **Jolie Scheibe**

**Jenna Counts** **Geoff Shew**

**Heather Durr** **Nora Shipley**

**Valerie Dymont** **Bonnie Shipman**

**Allison Etchemendy** **Christi Taylor**

**Jae Geller** (also guitar) **Katie Thackray**

**Fiona Gelston** **Nancy Timmons**

**Sylvia Grislis** **Chris Welton** (also drum)

**Maria JauJou** **Mandy Wes**

# Artistic Director

**Laurie de Leonne** is a dynamic, vivacious, choral conductor, composer, and chanteuse. In her diverse musical career, she champions collaborative music adventures of all kinds and in differing genres and roles, building a variety of ensembles including Redmond Chorale where she has been the founding artistic director for more than a decade. She is the Artistic Director for RainShadow Chorale in Port Townsend and Seattle Metropolitan Singers.



An active composer, Laurie was the artist-in-residence for Cora Voce in Tacoma, WA in 2021-2022 and the commissioned composer for WA ACDA's summer institute commissioning project. Her music has been commissioned internationally and is published by Walton/GIA, Santa Barbara Music Publishers, and her own Dandelion Music Press. Many of her pieces are featured in Project: Encore's vetted catalog of contemporary post-premiere choral compositions and two pieces were semifinalist and finalist in their divisions for The American Prize. She is a contributing editor to NoteNova Music Publishing.

Laurie is a multi-instrumentalist and vocalist with several rock bands including Phase 5, Radio School, and the acoustic duo blurry may. She enjoys performing as a guest artist-teacher in project-based adventures such as Summer Fling Vocal Ensemble, regional performing arts camps, karaoke and jam nights, local adjudicated music festivals, and professional and semiprofessional choral ensembles. She teaches at Carden Country School, nurtures individual students in her own private vocal and piano studio and is a past-president of Greater Seattle Choral Consortium.

# Accompanist



**Yuly Kopkin** is a Seattle transplant from Екатеринбург (Ekaterinburg), Russia. Conservatory-educated in his birth land, he holds a Master of Music in Choral Conducting from the University of Washington on a Fulbright scholarship. Vita in Canto, an internationally acclaimed university choir he founded in 2003 in his birth city, was a prize-winner at several national and international

choral festivals, enjoying an enthusiastic reception during their two concert tours of the USA.

Yuly is the founding artistic director of Spotlight Concert Choir, an auditioned ensemble in its first season, formed at Spotlight Repertory NW, a Sammamish-based non-profit arts organization. His other US conducting credits include Magnolia Chorale, Boeing Employees Choir, and Meridian Ensemble (the founding artistic director). Yuly is a music director at downtown Seattle's Christ Our Hope Catholic Church and a staff chorister at the Epiphany Parish of Seattle.

A prolific collaborative pianist, Yuly is staff accompanist at Shoreline Community College, Redmond Chorale and Ancora Choir. His ongoing and past piano accompaniment engagements include such established choirs as the University of Washington Chorale, Seattle Choral Company, Seattle Pro Musica and Choral Arts Northwest. He maintains an active schedule as a freelance collaborative pianist for voice recitals and productions of musicals and operas.



## Wales

- Calon Lan
- The Ash Grove
- The Bells of Rhymney \*

*These songs range from the unofficial Welsh rugby anthem, “Calon Lan”, to a song inspired by a coal mining disaster in which 439 miners were killed.*

**\* = Redmond Chamber Singers**



## England

- Barbara Allen \*
- Green Grow the Rushes, O \*
- The Lover’s Ghost \*
- Scarborough Fair
- Down By the Green Bushes

*These songs are about love; star-crossed lovers, money and status, transcending death, unrequited, and missing out on your true love.*



## Ireland

- Mairi’s Wedding
- Lost Songs of Ancient Ireland

*Also popular in Scotland, the Gaelic song “Mairi’s Wedding” is often sung to celebrate St. Patrick’s Day. “Lost Songs” is a collection of songs about shifting relationships over the scope of a lifetime, arranged by our very own Laurie de Leonne!*



## Scotland

- Aiken Drum
- Loch Lomond

*“Aiken Drum” is a children’s song which tells of a man whose clothes were made of various foods, and who lived on the moon. “Loch Lomond” relates the trials of two brothers, supporters of Bonnie Prince Charlie.*



## Northern Ireland (Ulster)

- Lovely Armoy

*The singer bids farewell to the village of Armoy, in County Antrim, Northern Ireland, as he leaves for America.*

## ... and our traditional

- Ashokan Farewell



Words and music by Jay Ungar and Molly Mason.

*Our traditional closing song which, though written in 1982, was used as the title theme for the PBS series, “The Civil War”.*

## The Redmond Chamber Singers

*Norman Bosell, Lyn Campbell, Hannah Coleman, Valerie Dymont, Amanda O'Connor, Russell Rhodes, Nora Shipley, Bonnie Shipman, Chris Welton, Mandy Wes*

# About Redmond Chorale



## Where?

We are a secular, community choir, and hold our rehearsals and concerts at Church of Holy Cross Episcopal, 11526 162nd Ave NE, Redmond, WA



## What?

Redmond Chorale is a semi-auditioned, SATB, adult-voiced choir performing a variety of choral literature in two concert seasons every year. Through excellent achievement and education in choral arts, Redmond Chorale partner with each other, and with the community, through music. People of all abilities are welcome to join us!



## Why?

To develop our vocal skills, spread the joy of singing, but most of all to have fun!



## Board Members

Marian Ottewell, Megan Benoy, Amanda O'Connor, Valerie Dymont, Alison Etchemendy, Nora Shipley, Laurie de Leonne, Norman Bosell, Jae Geller, Kara Ottewell

# Sing with us in Summer 2024!

We will be reconvening for our summer season which goes from **Monday 1<sup>st</sup> July 2024** to **Sunday August 25<sup>th</sup> 2024**. Rehearsals will begin at **7:00pm** on **Monday nights**, at the **Church of Holy Cross Episcopal, 11526 162nd Ave NE, Redmond, WA 98052**



To join Redmond Chorale, simply attend one of the first three Monday night rehearsals and stay after rehearsal for a truly painless 10-minute group audition!

Details, dates, and places, and the opportunity to make a donation, are at [www.redmondchorale.org](http://www.redmondchorale.org)

## Contact Us

Email: [info@redmondchorale.org](mailto:info@redmondchorale.org)

Web: [www.redmondchorale.org](http://www.redmondchorale.org)

We would like to thank the **City of Redmond**, **4Culture**, and **Treehouse Point** for their support!



Tel. 425-441-8087

<https://www.4culture.org/>

<https://www.treehousepoint.com/>

<https://www.redmond.gov/>